

imClear

Sample Preparation & Cleanup

Improve dramatically
your analytical results



Sample Preparation & Cleanup

Improve dramatically your analytical results

Choose imChem imClear

SPE Cartridges & QuEChERS

imClear SPE Cartridges & QuEChERS	4
imClear Polymer SPE Cartridges	6
imClear Silica SPE Cartridges	8
imClear Dedicated SPE Cartridges	10
imClear SPE Cartridges Ordering Information	12
imClear QuEChERS Kits	15
imClear QuEChERS Extraction Kits	15
imClear QuEChERS Clean-Up Kits	17
imClear Filtration Plates	20
imClear SPE Consumable	27

imClear

Increase dramatically your analytical results

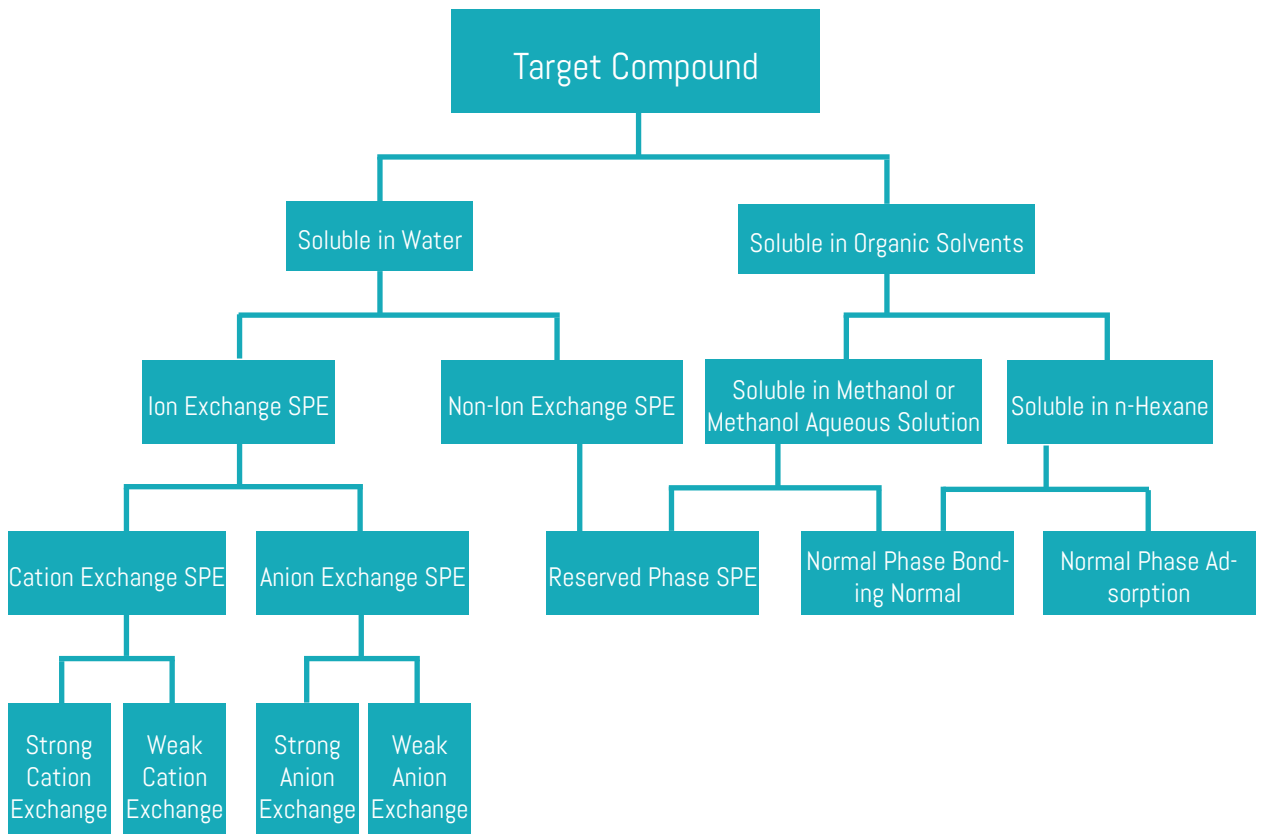
There is no sample without some kind of contaminants, impurities, or particulates. Therefore, sample preparation is an inevitable part of your HPLC chromatographic method.

Solid Phase Extraction (SPE) and QuEChERS (Quick, Easy, Cheap, Effective, Rugged and Safe) are sample preparation and cleanup techniques designed to handle a wide variety of complex matrix samples in many fields, such as environmental, pharmaceutical, biochemical, organic chemistry and food analysis.

imChem imClear range of products effectively remove interfering components in the samples to ensure satisfactory recovery and repeatability of each target analyte.

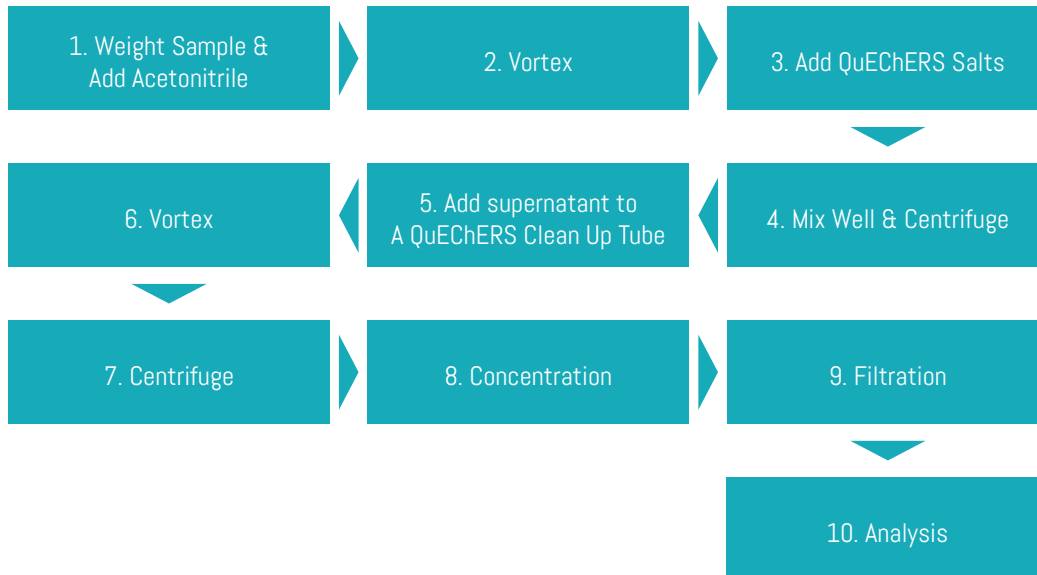
All products are manufactured with the best materials and strict manufacturing criteria.

SPE Cartridge Sorbent Selection Guide



imClear

General Procedures of QuEChERS



imClear Polymer SPE Cartridges

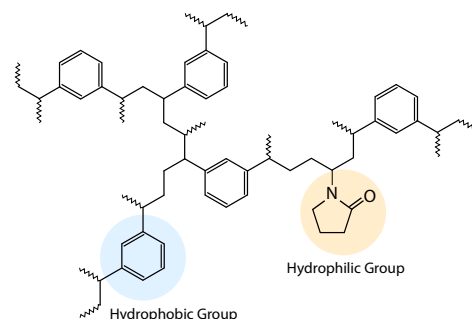
imChem offers one of the widest ranges of SPE cartridges in the market.

HLB Hydrophilic-Lipophilic Balanced

Extracting non-polar to moderately polar acidic, neutral and alkaline compounds

Specifications

Surface area: 600 m²/g Particle size: 40 μm Pore size: 300 Å



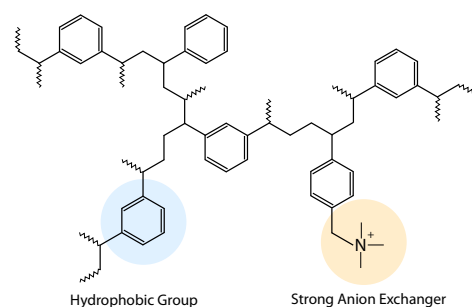
Product No.	Description	Qty.
ICSHLB003001	30mg/1mL	100
ICSHLB006003	60mg/3mL	50
ICSHLB020003	200mg/3mL	50
ICSHLB050003	500mg/3mL	50
ICSHLB015006	150mg/6mL	30
ICSHLB020006	200mg/6mL	30
ICSHLB050006	500mg/6mL	30
ICSHLB050012	500mg/12mL	20

MAX Mixed-mode Anion Exchange

Extracting acidic compounds

Specifications

Surface area: 600 m²/g



Product No.	Description	Qty.
ICSMAX003001	30mg/1mL	100
ICSMAX006003	60mg/3mL	50
ICSMAX020003	200mg/3mL	50
ICSMAX050003	500mg/3mL	50
ICSMAX015006	150mg/6mL	30
ICSMAX020006	200mg/6mL	30
ICSMAX050006	500mg/6mL	30
ICSMAX050012	500mg/12mL	20

imClear Polymer SPE Cartridges

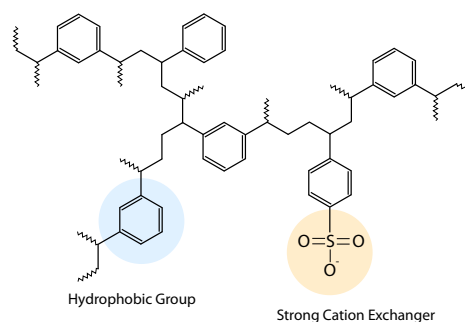
MCX Mixed-mode Cation Exchange

Extracting alkaline compounds

Specifications

Surface area: 600 m²/g Particle size: 40 μm Pore size: 300 Å

Product No.	Description	Qty.
ICSMCX003001	30mg/1mL	100
ICSMCX006003	60mg/3mL	50
ICSMCX020003	200mg/3mL	50
ICSMCX050003	500mg/3mL	50
ICSMCX015006	150mg/6mL	30
ICSMCX020006	200mg/6mL	30
ICSMCX050006	500mg/6mL	30
ICSMCX050012	500mg/12mL	20



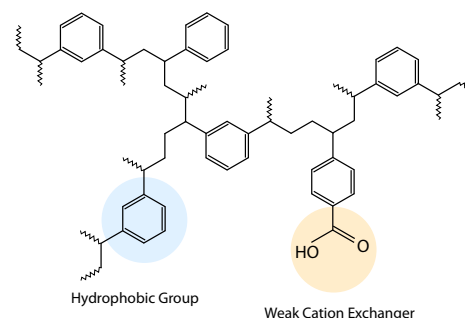
WCX Weak Cation Exchange

Extracting strong bases

Specifications

Surface area: 600 m²/g Particle size: 40 μm Pore size: 300 Å

Product No.	Description	Qty.
ICSWCX003001	30mg/1mL	100
ICSWCX006003	60mg/3mL	50
ICSWCX020003	200mg/3mL	50
ICSWCX050003	500mg/3mL	50
ICSWCX015006	150mg/6mL	30
ICSWCX020006	200mg/6mL	30
ICSWCX050006	500mg/6mL	30



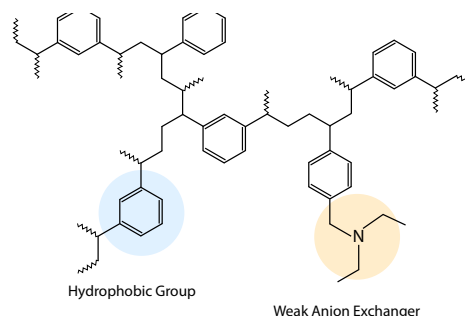
WAX Weak Anion Exchange

Extracting strong acids

Specifications

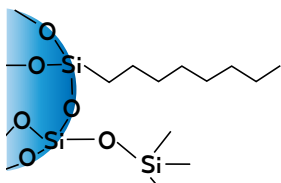
Surface area: 600 m²/g Particle size: 40 μm Pore size: 300 Å

Product No.	Description	Qty.
ICSWAX003001	30mg/1mL	100
ICSWAX006003	60mg/3mL	50
ICSWAX020003	200mg/3mL	50
ICSWAX050003	500mg/3mL	50
ICSWAX015006	150mg/6mL	30
ICSWAX020006	200mg/6mL	30
ICSWAX050006	500mg/6mL	30



imClear Silica SPE Cartridges

C8 Octyl



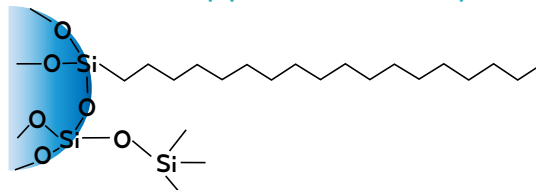
Extracting non-polar compounds

Specifications

Carbon content: 9% Surface area: 280 m²/g
Particle size: 40 - 75 μm Pore size: 70 Å

Product No.	Description	Qty.
ICSC8010001	100mg/1mL	100
ICSC8020003	200mg/3mL	50
ICSC8050003	500mg/3mL	50
ICSC8050006	500mg/6mL	30

C18 Endcapped Octadecyl



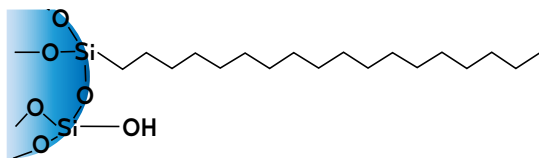
Extracting non-polar compounds

Specifications

Carbon content: 17.6% Surface area: 300 m²/g
Particle size: 40 - 60 μm Pore size: 70 Å

Product No.	Description	Qty.
ICSC18010001	100mg/1mL	100
ICSC18020003	200mg/3mL	50
ICSC18050003	500mg/3mL	50
ICSC18050006	500mg/6mL	30

C18N Unendcapped Octadecyl



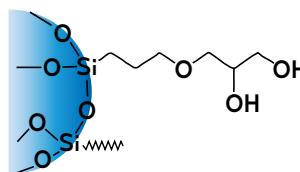
Extracting polar and non-polar compounds

Specifications

Carbon content: 17% Surface area: 300 m²/g
Particle size: 40 - 75 μm Pore size: 70 Å

Product No.	Description	Qty.
ICSC18N010001	100mg/1mL	100
ICSC18N020003	200mg/3mL	50
ICSC18N050003	500mg/3mL	50
ICSC18N050006	500mg/6mL	30

Diol Dihydroxy



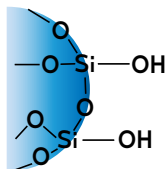
Extracting polar compounds

Specifications

Carbon content: 5.5% Surface area: 290 m²/g
Particle size: 40 - 75 μm Pore size: 70 Å

Product No.	Description	Qty.
ICSDI010001	100mg/1mL	100
ICSDI020003	200mg/3mL	50
ICSDI050003	500mg/3mL	50
ICSDI050006	500mg/6mL	30

Silica Unbounded Silica Gel



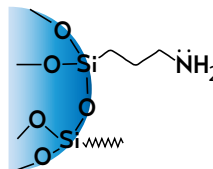
Extracting polar compounds

Specifications

Surface area: 480 m²/g
Particle size: 40 - 75 μm Pore size: 70 Å

Product No.	Description	Qty.
ICSSIL020003	200mg/3mL	50
ICSSIL050003	500mg/3mL	50
ICSSIL050006	500mg/6mL	30
ICSSIL100006	1000mg/6mL	30

NH2 Aminopropyl



Extracting moderately polar and acidic compounds

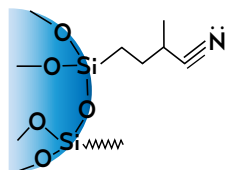
Specifications

Carbon content: 4.5% Surface area: 200 m²/g
Particle size: 40 - 75 μm Pore size: 70 Å

Product No.	Description	Qty.
ICSNH020003	200mg/3mL	50
ICSNH050003	500mg/3mL	50
ICSNH050006	500mg/6mL	30
ICSNH100006	1000mg/6mL	30

imClear Silica SPE Cartridges

CN Cyanopropyl



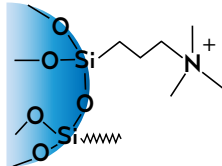
Extracting polar and non-polar compounds, enriching metal ions

Specifications

Carbon content: 5.8% Surface area: 280 m²/g
 Particle size: 40 - 75 μm Pore size: 70 Å

Product No.	Description	Qty.
ICSCN010001	100mg/1mL	100
ICSCN020003	200mg/3mL	50
ICSCN050003	500mg/3mL	50
ICSCN050006	500mg/6mL	30

SAX Strong Anion Exchange



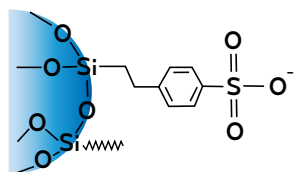
Extracting acidic compounds

Specifications

Surface area: 510 m²/g
 Particle size: 40 - 75 μm Pore size: 70 Å

Product No.	Description	Qty.
ICSSAX020003	200mg/3mL	50
ICSSAX050003	500mg/3mL	50
ICSSAX050006	500mg/6mL	30
ICSSAX100006	1000mg/6mL	30

SCX Strong Cation Exchange



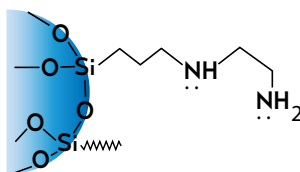
Extracting basic compounds

Specifications

Surface area: 510 m²/g
 Particle size: 40 - 75 μm Pore size: 70 Å

Product No.	Description	Qty.
ICSSCX020003	200mg/3mL	50
ICSSCX050003	500mg/3mL	50
ICSSCX050006	500mg/6mL	30
ICSSCX100006	1000mg/6mL	30

PSA Primary-Secondary Amine



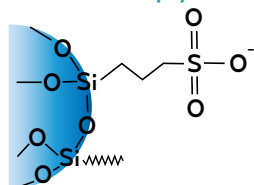
Extracting strong acids, polar compounds and metal ions

Specifications

Carbon content: 8% Surface area: 500 m²/g
 Particle size: 50 - 75 μm Pore size: 70 Å

Product No.	Description	Qty.
ICSPSA020003	200mg/3mL	50
ICSPSA050003	500mg/3mL	50
ICSPSA050006	500mg/6mL	30
ICSPSA100006	1000mg/6mL	30

PRS Propylsulfonic Acid



Extracting weak bases in biological fluids

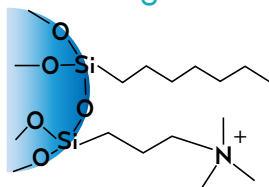
Specifications

Carbon content: 4.5% Surface area: 310 m²/g
 Particle size: 40 - 75 μm Pore size: 70 Å

Product No.	Description	Qty.
ICSPRS010001	100mg/1mL	100
ICSPRS020003	200mg/3mL	50
ICSPRS050003	500mg/3mL	50
ICSPRS050006	500mg/6mL	30

imClear Dedicated SPE Cartridges

C8/SAX Octyl/Strong Anion Exchange



Extracting acidic drugs in biological fluids

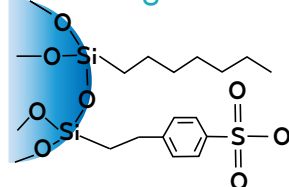
Specifications

Surface area: 510 m²/g

Particle size: 40 - 75 μm Pore size: 70 Å

Product No.	Description	Qty.
ICSC8SAX010001	100mg/1mL	100
ICSC8SAX020003	200mg/3mL	50
ICSC8SAX050006	500mg/6mL	30

C8/SCX Octyl/Strong Cation Exchange



Extracting basic drugs in biological fluids

Specifications

Surface area: 510 m²/g

Particle size: 40 - 75 μm Pore size: 70 Å

Product No.	Description	Qty.
ICSC8SCX010001	100mg/1mL	100
ICSC8SCX020003	200mg/3mL	50
ICSC8SCX050006	500mg/6mL	30

Carb-GCB Graphitized Carbon Black

Extracting herbicides in drinking water

Specifications

Surface area: 100 m²/g

Particle size: 100 - 300 mesh

Product No.	Description	Qty.
ICSGCB050006	500mg/6mL	30

Carb-GCB/NH₂ Graphitized Carbon Black/ Aminopropyl Bilayer

Cleanup of samples in multiresidual pesticide analysis

GCB Specifications

Surface area: 100 m²/g

Particle size: 100 - 300 mesh

NH₂ Specifications

Carbon content: 4.5% Surface area: 200 m²/g

Particle size: 40 - 75 μm Pore size: 70 Å

Product No.	Description	Qty.
ICSNHGC655	500mg/500mg/6mL	30

Carb-GCB/PSA Graphitized Carbon Black/ Primary secondary Amine Bilayer

Cleanup of samples in multiresidual pesticide analysis

GCB Specifications

Surface area: 100 m²/g

Particle size: 100 - 300 mesh

PSA Specifications

Carbon content: 8% Surface area: 500 m²/g

Particle size: 40 - 75 μm Pore size: 70 Å

Product No.	Description	Qty.
ICSPSGC655	500mg/500mg/6mL	30

Florisil Pesticide Grade

Extracting multiresidual pesticide

Specifications

Particle size: 150 - 250 μm

Product No.	Description	Qty.
ICSFLO50006	500mg/6mL	30
ICSFL100006	1000mg/6mL	30
ICSFL122000	2000mg/12mL	20

imClear Dedicated SPE Cartridges

ALA, ALN, ALB, Alumina

Extracting aromatic amines

Specifications

Surface area: > 150 m²/g

pH: Acidic Alumina pH 4.0
 Neutral Alumina pH 7.0
 Basic Alumina pH 9.5

1. Acidic Alumina (ALA)

Product No.	Description	Qty.
ICSALA050003	500mg/3mL	50
ICSALA050006	500mg/6mL	30
ICSALA100006	1000mg/6mL	30

2. Neutral Alumina (ALN)

Product No.	Description	Qty.
ICSALN050003	500mg/3mL	50
ICSALN050006	500mg/6mL	30
ICSALN100006	1000mg/6mL	30

3. Basic Alumina (ALB)

Product No.	Description	Qty.
ICSALB050003	500mg/3mL	50
ICSALB050006	500mg/6mL	30
ICSALB100006	1000mg/6mL	30

SLE Cartridges for AZO Dye Testing Determination of banned azo dyes in textile products

The majority of dyes and pigments currently utilized in the textile and leather industries are azo dye compounds. These compounds can break down into fatty or aromatic amines when subjected to reducing conditions. Some of these aromatic amines derived from azo compounds are considered to be carcinogenic or potentially carcinogenic, and as a result, they are prohibited in the European Union, the United States, and China.

imChem offers SLE cartridges that have been specifically optimized for the detection of banned azo dyes in textile products. By using these cartridges, you can efficiently and dependably manage the quality of your products while safeguarding the health of your customers.

Features

- Packed with dedicatedly optimized diatomaceous earth
- Frits with excellent flowrate control technology
- Complying with China and EU official methods
- Superb performance proven by China's most authoritative textile testing institute

Typical Recoveries

Analyte	Recovery Rate
2,4-diaminoanisole	>20
o-toluidine	>50
2,4-diaminotoluene	>50
other aromatic amines	>70

Related Methods

- EN 14362-1:2017 Textiles: methods for determination of certain aromatic amines derived from azo colorants

Product No.	Description	Qty.
ICSAZ0014580	14.5g/80ml	4

imClear SPE Cartridges

Ordering Information

Name	Product No.	Description	Qty.
SPE HLB	ICSHLB003001	30mg/1mL	100
	ICSHLB006003	60mg/3mL	50
	ICSHLB020003	200mg/3mL	50
	ICSHLB015006	150mg/6mL	30
	ICSHLB020006	200mg/6mL	30
	ICSHLB050006	500mg/6mL	30
	ICSHLB050012	500mg/12mL	20
SPE WCX	ICSWCX003001	30mg/1mL	100
	ICSWCX006003	60mg/3mL	50
	ICSWCX020003	200mg/3mL	50
	ICSWCX050003	500mg/3mL	50
	ICSWCX015006	150mg/6mL	30
	ICSWCX020006	200mg/6mL	30
	ICSWCX050006	500mg/6mL	30
SPE WAX	ICSWAX003001	30mg/1mL	100
	ICSWAX006003	60mg/3mL	50
	ICSWAX020003	200mg/3mL	50
	ICSWAX050003	500mg/3mL	50
	ICSWAX015006	150mg/6mL	30
	ICSWAX020006	200mg/6mL	30
	ICSWAX050006	500mg/6mL	30
SPE MCX	ICSMCX003001	30mg/1mL	100
	ICSMCX006003	60mg/3mL	50
	ICSMCX020003	200mg/3mL	50
	ICSMCX015006	150mg/6mL	30
	ICSMCX020006	200mg/6mL	30
	ICSMCX050006	500mg/6mL	30
	ICSMCX050012	500mg/12mL	20

imClear SPE Cartridges

Name	Product No.	Description	Qty.
SPE MAX	ICSMAX003001	30mg/1mL	100
	ICSMAX006003	60mg/3mL	50
	ICSMAX020003	200mg/3mL	50
	ICSMAX015006	150mg/6mL	30
	ICSMAX020006	200mg/6mL	30
	ICSMAX050006	500mg/6mL	30
	ICSMAX050012	500mg/12mL	20
SPE C18	ICSC18010001	100mg/1mL	100
	ICSC18020003	200mg/3mL	50
	ICSC18050006	500mg/6mL	30
SPE C18N	ICSC18N010001	100mg/1mL	100
	ICSC18N020003	200mg/3mL	50
	ICSC18N050006	500mg/6mL	30
SPE C8	ICSC8010001	100mg/1mL	100
	ICSC8020003	200mg/3mL	50
	ICSC8050006	500mg/6mL	30
SPE Silica	ICSSIL020003	200mg/3mL	50
	ICSSIL050006	500mg/6mL	30
	ICSSIL100006	1000mg/6mL	30
SPE PRS(SO3H)	ICSPRS010001	100mg/1mL	100
	ICSPRS020003	200mg/3mL	50
	ICSPRS050006	500mg/6mL	30
SPE Diol	ICSDI010001	100mg/1mL	100
	ICSDI020003	200mg/3mL	50
	ICSDI050006	500mg/6mL	30
SPE CN	ICSCN010001	100mg/1mL	100
	ICSCN020003	200mg/3mL	50
	ICSCN050006	500mg/6mL	30
SPE SCX	ICSSCX020003	200mg/3mL	50
	ICSSCX050006	500mg/6mL	30
	ICSSCX100006	1000mg/6mL	30
SPE SAX	ICSSAX020003	200mg/3mL	50
	ICSSAX050006	500mg/6mL	30
	ICSSAX100006	1000mg/6mL	30

imClear SPE Cartridges

Name	Product No.	Description	Qty.
SPE NH2	ICSNH020003	200mg/3mL	50
	ICSNH050006	500mg/6mL	30
	ICSNH100006	1000mg/6mL	30
SPE PSA	ICSPSA020003	200mg/3mL	50
	ICSPSA050006	500mg/6mL	30
	ICSPSA100006	1000mg/6mL	30
SPE Florisil	ICSFL050006	500mg/6mL	30
	ICSFL100006	1000mg/6mL	30
	ICSFL122000	2000mg/12mL	20
SPE GCB	ICSGCB050006	500mg/6mL	30
SPE AluminaA	ICSALA050003	500mg/3mL	50
	ICSALA050006	500mg/6mL	30
	ICSALA100006	1000mg/6mL	30
SPE Alumina B	ICSALB050003	500mg/3mL	50
	ICSALB050006	500mg/6mL	30
	ICSALB100006	1000mg/6mL	30
SPE Alumina N	ICSALN050003	500mg/3mL	50
	ICSALN050006	500mg/6mL	30
	ICSALN100006	1000mg/6mL	30
SPE GCB/NH2	ICSNHGC655	500mg/500mg/6mL	30
SPE GCB/PSA	ICSPSGC655	500mg/500mg/6mL	30
SPE C8/SCX	ICSC8SCX010001	100mg/1mL	100
	ICSC8SCX020003	200mg/3mL	50
	ICSC8SCX050006	500mg/6mL	30
SPE C8/SAX	ICSC8SAX010001	100mg/1mL	100
	ICSC8SAX020003	200mg/3mL	50
	ICSC8SAX050006	500mg/6mL	30
SLE AZO Dyes column	ICSAZ0014580	14.5g/80ml	4
SPE HLB-lim	ICSHLB020003LIM	HLB Lim Cartridges,3 mL	50

imClear QuEChERS Kits

imClear QuEChERS Extraction Kits

imClear QuEChERS Extraction Kits consist of extraction pouches and 50 mL centrifuge tubes, with the option of including ceramic homogenizers if desired.

The extraction pouches contain anhydrous extraction salts. Within the mixture, MgSO₄ is responsible for eliminating water from the samples, while other components are essential for maintaining the appropriate pH level, ensuring optimal recovery of alkaline-sensitive pesticides.

It is not recommended to directly add water-rich samples into tubes containing extraction salts, as this can lead to localized overheating, compromising the resulting recoveries. To prevent such situations, imChem offers separate extraction salt pouches. These allow the operator to add the extraction salts after the organic solvents have been added.

Key features of the kit include:

- The salts are securely sealed in aluminum foil bags to prevent any leakage.
- The composition details are printed on the bag for easy reference and selection. The package is designed for easy tearing and convenient use.
- The automated powder dispensing and packaging assembly line ensures accuracy and repeatability throughout the process.

imClear QuEChERS Kits

AOAC 2007.01 Kits				
imClear No	Description	Sorbents	Specification	Packing
ICQXH020050	AOAC Extraction Kit (Extraction salts +50mL Tube) with centrifuge tube shelf	6g MgSO ₄ , 1.5g Na Acetate	50ml	50
ICQCH020050	AOAC Extraction Kit (Extraction salts +50mL Tube+ceramic homogenizers) with centrifuge tube shelf	6g MgSO ₄ , 1.5g Na Acetate	50ml	50
EN 15662 Kits				
imClear No	Description	Sorbents	Specification	Packing
ICQXH010050	EN Extraction Kit (Extraction salts +50mL Tube) with centrifuge tube shelf	4g MgSO ₄ , 1gNaCl, 1g Na-Citrate, 0.5gNa-Citrate sesquihydrate	50ml	50
ICQCH010050	EN Extraction Kit (Extraction salts +50mL Tube+ceramic homogenizers) with centrifuge tube shelf	4g MgSO ₄ , 1gNaCl, 1g Na-Citrate, 0.5gNa-Citrate sesquihydrate	50ml	50
Original Method Kits MOQ : 1000PCS				
imClear No	Description	Sorbents	Specification	Packing
ICQXH040050	EN Extraction Kit (Extraction salts +50mL Tube) with centrifuge tube shelf	4g MgSO ₄ , 1gNaCl	50ml	50
ICQCH040050	EN Extraction Kit (Extraction salts +50mL Tube+ceramic homogenizers) with centrifuge tube shelf	4g MgSO ₄ , 1gNaCl	50ml	50

imClear QuEChERS Kits

imClear QuEChERS Clean-Up Kits

imClear QuEChERS Clean-Up Kits are comprehensive kits designed for sample purification. They consist of sorbents, anhydrous MgSO₄, 2 mL and 15 mL centrifuge tubes, and optional ceramic homogenizers. The sorbents available include PSA, C18-EC, GCB, and more. PSA is specifically used to eliminate fatty acids and organic acids from samples, C18-EC effectively removes fats, and GCB targets the removal of pigments from samples. Choose appropriate sorbent according to different samples.

Features:

- Supply 2 mL or 15 mL clean-up tubes
- Suitable for AOAC 2007, EN 15662 standards, etc

BS EN 15662: 2018 Kits				
imClear No	Description	Sorbents	Specification	Packing
ICQXH030002	PSA Clean-up tube1	25mg PSA, 150mg MgSO ₄	2ml (1ml sample)	100
ICQXH022015	PSA Clean-up tube2	150mg PSA, 900mg MgSO ₄	15ml (6ml sample)	50
ICQXH032002	PSA/C18 Clean-up tube1	25mg PSA, 25mg C18, 150mg MgSO ₄	2ml (1ml sample)	100
ICQXH032015	PSA/C18 Clean-up tube2	150mg PSA, 150mg C18, 900mg MgSO ₄	15ml (6ml sample)	50
ICQXH020002	PSA/GCB Clean-up tube	25mg PSA, 2.5mg GCB, 150mgMg- SO ₄	2ml (1ml sample)	100
ICQXH020015	PSA/GCB Clean-up tube1	150mg PSA, 15mg GCB, 900mg MgSO ₄	15ml (6ml sample)	50
ICQXH024002	PSA/GCB Clean-up tube	25mg PSA, 7.5mg GCB, 150mg MgSO ₄	2ml (1ml sample)	100
ICQXH024015	PSA/GCB Clean-up tube2	150mg PSA, 45mg GCB, 900mg MgSO ₄	15ml (6ml sample)	50

imClear QuEChERS Kits

Ceramic Homogenizers MOQ : 1000PCS				
imClear No	Description	Sorbents	Specification	Packing
ICQXB901009	Ceramic Homogenizers For 2 mL Tubes		2 mL	200
ICQXB902009	Ceramic Homogenizers For 15 mL Tubes		15 mL	100
ICQXB903009	Ceramic Homogenizers For 50 mL Tubes		50 mL	100
AOAC 2007.01 Kits				
imClear No	Description	Sorbents	Specification	Packing
ICQXH031002	PSA Clean-up tube1	50mg PSA, 150mg MgSO4	2ml (1ml sample)	100
ICQXH031015	PSA Clean-up tube2	400mg PSA, 1200mg MgSO4	15ml (8ml sample)	50
ICQXH033002	PSA/C18 Clean-up tube1	50mg PSA, 50mg C18, 150mg MgSO4	2ml (1ml sample)	100
ICQXH033015	PSA/C18 Clean-up tube2	400mg PSA, 400mg C18, 1200mg MgSO4	15ml (8ml sample)	50
ICQXH026015	PSA/C18 Clean-up tube3	100mg PSA, 100mg C18, 300mg MgSO4	15ml (8ml sample)	50
ICQXH036002	PSA/GCB Clean-up tube	50mg PSA, 50mg GCB, 150mgMg- SO4	2ml (1ml sample)	100
ICQXH036015	PSA/GCB Clean-up tube	400mg PSA, 400mg GCB, 1200mg MgSO4	15ml (8ml sample)	50
ICQXH040002	PSA/C18/GCB Clean-up tube1	50mg PSA, 50mg C18, 50mg GCB, 150mg MgSO4	2ml (1ml sample)	100
ICQXH040015	PSA/C18/GCB Clean-up tube2	400mg PSA, 400mg C18, 400mg GCB, 1200mg MgSO4	15ml (8ml sample)	50

imClear QuEChERS Kits

imClear No	Description	Sorbents	Specification	Packing
ICQXH025002	C18 Clean-up tube	150mg MgSO ₄ , 25mg C18	2ml (1ml sample)	100
ICQXH025015	C18 Clean-up tube	900mg MgSO ₄ , 150mg C18	15ml (8ml sample)	50
ICQXH035002	PSA/C18/GCB Clean-up tube	50mg PSA, 50mg C18, 7.5mg GCB, 150mg MgSO ₄	2ml (1ml sample)	100
ICQXH035015	PSA/C18/GCB Clean-up tube	400mg PSA, 400mg C18, 45mg GCB, 1200mg MgSO ₄	15ml (8ml sample)	50

imClear Filtration Plate

Well Filtration Plates

imClear Well Filtration Plates

imClear No	Material	Pore Size	Description	Package pcs/box
Filtration Plate(1mL)				
ICP0049015	PE(polyethylene)	5µm	96-Well Filtration Plate, 1000µL/Well, One 5µm Frit/Well	4
ICP00490120		20µm	96-Well Filtration Plate, 1000µL/Well, One 20µm Frit/Well	4
ICP00490150		50µm	96-Well Filtration Plate, 1000µL/Well, One 50µm Frit/Well	4
Filtration Plate(1.5mL)				
ICP0049025	PE(polyethylene)	5µm	96-Well Filtration Plate, 1500µL/Well, One 5µm Frit/Well	4
ICP00490220		20µm	96-Well Filtration Plate, 1500µL/Well, One 20µm Frit/Well	4
ICP00490250		50µm	96-Well Filtration Plate, 1500µL/Well, One 50µm Frit/Well	4
Filtration Plate(2mL)				
ICP0049035	PE(polyethylene)	5µm	96-Well Filtration Plate, 2000µL/Well, One 5µm Frit/Well	2
ICP00490320		20µm	96-Well Filtration Plate, 2000µL/Well, One 20µm Frit/Well	2
ICP00490350		50µm	96-Well Filtration Plate, 2000µL/Well, One 50µm Frit/Well	2
DVfree 96 -Well Filtration Plate(400uL)				
ICP0096015	PE(polyethylene)	5µm	DVfree 96-Well Filtration Plate, 400µL/Well, One 5µm Frit/Well	4
ICP00960120		20µm	DVfree 96-Well Filtration Plate, 400µL/Well, One 20µm Frit/Well	4
DVfree 96 -Well Filtration Plate(600uL)				
ICP0096025	PE(polyethylene)	5µm	DVfree 96-Well Filtration Plate, 600µL/Well, One 5µm Frit/Well	4
ICP00960220		20µm	DVfree 96-Well Filtration Plate, 600µL/Well, One 20µm Frit/Well	4

imClear Filtration Plate

96-Well Micro-Filter Plates

imClear 96-Well Micro-Filter Plates are precision injection molded of polystyrene and equipped with many different types and materials of filter membranes, such as polyvinylidene fluoride (PVDF), mixed cellulose (MCE), polytetrafluoroethylene (PTFE) and other microporous filter membranes. Seamless integration is achieved by individually sealed well and removable guide plate and collection plate.

imClear No	Material	Pore Size	Description	Package pcs/box
ICP0096MCE45	MCE	0.45μm	96 Well Micro-Filter Plate, 350μL, hydrophilic MCE, 0.45μm	10
ICP0096MCE22		0.22μm	96 Well Micro-Filter Plate, 350μL, hydrophilic MCE, 0.22μm	10
ICP0096PVDFH45	hydrophilic PVDF	0.45μm	96 Well Micro-Filter Plate, 350μL, hydrophilic PVDF, 0.45μm	10
ICP0096PVDFH22		0.22μm	96 Well Micro-Filter Plate, 350μL, hydrophilic PVDF, 0.22μm	10
ICP0096PVDF45	PVDF	0.45μm	96 Well Micro-Filter Plate, 350μL, organic PVDF, 0.45μm	10
ICP0096PVDF22		0.22μm	96 Well Micro-Filter Plate, 350μL, organic PVDF, 0.22μm	10
ICP0096PTFEH45	hydrophilic PTFE	0.45μm	96 Well Micro-Filter Plate, 350μL, hydrophilic PTFE, 0.45μm	10
ICP0096PTFEH22		0.22μm	96 Well Micro-Filter Plate, 350μL, hydrophilic PTFE, 0.22μm	10
ICP0096PTFE45	PTFE	0.45μm	96 Well Micro-Filter Plate, 350μL, organic PTFE, 0.45μm	10
ICP0096PTFE22		0.22μm	96 Well Micro-Filter Plate, 350μL, organic PTFE, 0.22μm	10
ICP0096CA45	CA	0.45μm	96 Well Micro-Filter Plate, 350μL, hydrophilic CA, 0.45μm	10
ICP0096CA22		0.22μm	96 Well Micro-Filter Plate, 350μL, hydrophilic CA, 0.22μm	10

imClear Filtration Plate

96 Well Protein Precipitation (PPT) Plates

Copure® 96-Well Protein Precipitation (PPT) Plate is designed to remove proteins from biological fluid samples (plasma, serum or blood), suitable for LC-MS/MS clinical detection studies.

Features

- Low adsorption membrane filter is applied, which resistant to pH 0-14
- Membrane filter is made by a special process and does not break at high-speed centrifugation
- Super long retention time, effective interception of precipitate, no liquid leakage
- Suitable for clinical diagnosis, pharmacokinetic study, new drug development and scientific research

	imClear No	Description	Qty. pcs/Box
SLE	ICPMCX9630	imClear SPE MCX 96-well plate, 30 mg/1 mL, 30 mg/2 mL	1
	ICPSLE96200	imClear well SLE plate, 200 µL/1 mL	1

imClear Filtration Plate

96-Well Solid Phase Extraction (SPE) Plates

imClear 96-well SPE Plates are designed for highthroughput clinical mass spectrometry based on imChem special SPE sorbents and core accessories. The special SPE sorbents have more uniform particle size, larger specific surface area, higher loading capacity, higher purity, and no background impurities. imClear 96-well SPE Plates overcame the difficulties of complex matrix of biological samples and extremely low amount of target to achieve excellent purity, excellent stability and low background interference result to ensure the quality of analysis. Beside the products, we also provide applications as reference to address customer concerns. Our products have excellent recovery rate of steroid hormones, catecholamines, vitamins, etc.

Features

- HLB is a versatile, hydrophilic-lipophilic-balanced reversed-phase sorbent suitable for acidic, basic, and neutral compounds.
- MCX is a strong cation exchange reversed-phase sorbent with high selectivity for weakly basic compounds.
- MAX is a strong anion exchange reversed-phase sorbent with high selectivity for weakly acidic compounds.
- WCX is a weak cation exchange reversed-phase sorbent with high selectivity for strongly basic compounds.
- WAX is a weak anion exchange reversed-phase sorbent with high selectivity for strongly acidic compounds.

DVfree 96-Well Plates

- No dead volume structure design, no solvent residue, reduce analyte loss.
- 3-5 mg sorbent per well, suitable for extraction of trace substances.
- Trace sorbent evenly packed with better results consistency and reproducibility.
- No evaporation and reconstitution necessary due to elution volumes as low as 25 μL .
- Compatible with imChem positive pressure devices and most liquid-handling robotic systems for automated, reliable high-throughput solid phase extraction.

Regular 96-Well Plates

- Classic 96-well plate design for greater versatility.
- Available in 10 mg, 30 mg, etc. with high sample loading to meet most customer needs.
- Compatible with imChem positive pressure devices and most liquid-handling robotic systems for automated, reliable high-throughput solid phase extraction.

imClear Filtration Plate

Results

1. MS Series HLB 96-Well Plate recovery and stability results

4 Steroid Hormones in Spiked Plasma				
Concentration (ppb)	Recovery (% ,n=24)			
	Cortisone	Corticosterone	Androstenedione	Testosterone
2	82.2	101.0	102.6	1284
20	1024	101.0	1254	125.0

As result, under different spiked concentrations, the four compounds have good recovery.

MS Series HLB Stability	
Compound	CV(% ,n=24)
Cortisone	6.00
Corticosterone	5.44
Androstenedione	5.35
Testosterone	6.89

In this experiment, the results of target compound compared from different wells from different plates and batches. The result shows good stability.

2. MS Series WCX 96-well plate stability test

Catecholamine Stability		
Compound	CV (%)	n
NMN	11.63	44
MN	4.75	44

3. MS Series MCX 96-Well Plate recovery and stability results

Thyroid Hormones T3 and T4 in Serum Recovery Rate			
Compound	Recovery(% ,n=24)		
	4.5 ppb	18 ppb	45 ppb
T3	86.36	96.15	93.73
T4	103.5	116.2	109.22

As result, under different spiked concentrations, both T3 and T4 have good recovery.

Thyroid Hormones T3 and T4 in Serum Stability		
Compound	CV(%)	n
T3	4.5 ppb	4.88
	18 ppb	2.98
	45 ppb	1.05
T4	4.5 ppb	7.92
	18 ppb	1.41
	45 ppb	0.75

In this experiment, the results of target compound compared from different wells from different plates and batches. The result shows good stability.

imClear Filtration Plate

	imClear No	Description	Qty. pcs/Box
SPE DVfree	ICPHLB9603	imClear SPE HLB 96-well plate, 3 mg/600 μ L	1
	ICPHLB9605	imClear SPE HLB 96-well plate, 5 mg/600 μ L	1
	ICPWAX9603	imClear SPE WAX 96-well plate, 3 mg/600 μ L	1
	ICPWAX9605	imClear SPE WAX 96-well plate, 5 mg/600 μ L	1
	ICPWCX9603	imClear SPE WCX 96-well plate, 3 mg/600 μ L	1
	ICPWCX9605	imClear SPE WCX 96-well plate, 5 mg/600 μ L	1
	ICPMAX9603	imClear SPE MAX 96-well plate, 3 mg/600 μ L	1
	ICPMAX9605	imClear SPE MAX 96-well plate, 5 mg/600 μ L	1
	ICPMCX9603	imClear SPE MCX 96-well plate, 3 mg/600 μ L	1
	ICPMCX9605	imClear SPE MCX 96-well plate, 5 mg/600 μ L	1
SPE Regular	ICPHLB9610	imClear SPE HLB 96-well plate, 10 mg/1 mL, 10 mg/2 mL	1
	ICPHLB9630	imClear SPE HLB 96-well plate, 30 mg/1 mL, 30 mg/2 mL	1
	ICPWAX9610	imClear SPE WAX 96-well plate, 10 mg/1 mL, 10 mg/2 mL	1
	ICPWAX9630	imClear SPE WAX 96-well plate, 30 mg/1 mL, 30 mg/2 mL	1
	ICPWCX9610	imClear SPE WCX 96-well plate, 10 mg/1 mL, 10 mg/2 mL	1
	ICPWCX9630	imClear SPE WCX 96-well plate, 30 mg/1 mL, 30 mg/2 mL	1
	ICPMAX9610	imClear SPE MAX 96-well plate, 10 mg/1 mL, 10 mg/2 mL	1
	ICPMAX9630	imClear SPE MAX 96-well plate, 30 mg/1 mL, 30 mg/2 mL	1
	ICPMCX9610	imClear SPE MCX 96-well plate, 10 mg/1 mL, 10 mg/2 mL	1
	ICPMCX9630	imClear SPE MCX 96-well plate, 30 mg/1 mL, 30 mg/2 mL	1

imClear Filtration Plate

96 Well Supported Liquid Extraction (SLE) Plate

96-well SLE plate adopts special technology to process the materials. The material adopts porous diatomite filler with high specific surface area and strong chemical inertia as liquidliquid distribution carrier. It can replace the most of traditional liquid-liquid extraction methods, and it has higher extraction efficiency and stability. This method is widely used in food safety, environmental monitoring, clinical diagnosis and industrial product detection.

Features

- Replace the traditional liquid-liquid extraction, provide an ideal surface of liquid-liquid extraction for target analytes
- Avoid the emulsions phenomenon
- The operation of SLE is very simple: load-elute, saving solvent and time, easy to automate
- Better reproducibility and higher recovery
- Lower detection limit and higher sensitivity

	imClear No	Description	Qty. pcs/Box
SLE	ICPSLE96200	imClear well SLE plate, 200 μ L/1 mL	1
	ICPSLE96400	imClear well SLE plate, 400 μ L/2 mL	1

imClear SPE Consumable

	imClear No	Description	Qty.pcs/Box
SPE cartridge	ICCC004304	Empty Luer-Inlet SPE Cartridges, with PE Frits,3 mL	100
	ICCC0ICH01	Sample Prep. Cartridge IC-H ,0.5 mL 50x	50
	ICCC0ICAG01	Sample Prep. Cartridge IC-Ag ,0.5 mL 50x	50
	ICCC004103K	6mL SPE empty column tool set, including empty column tube, frit and column packing push rod	100
	ICCC003BC1	3 mL Empty Straight-Barrel Tubes	200
	ICCC004303	1-mL Empty Luer-Inlet SPE Cartridges, with PE Frits	100
	ICCSPE9615	96-Well SPE Plates, 1.5 mL, Round Well, Two Frits/Well	4
	ICCC0041012	1-mL Empty SPE Cartridges, with PE Frits	100
	ICCC004102	3-mL Empty SPE Cartridges, with PE Frits	100
	ICCC004103	6-mL Empty SPE Cartridges, with PE Frits	100
	ICCC004151	6mL Empty SPE Glass Cartridges, with 2 pcs PE Frits	30
	ICCGCT006MY10	6-mL Empty SPE Cartridges,glass	10
	ICCC006BC100Z	6-mL Empty SPE Cartridges	100
	Frits	ICCSPEF13025201	Fiber frits for SPE column,6 ml. 13.0mm, 2.5mm, 20µm

imClear SPE Consumable

	imClear No	Description	Qty.pcs/Box
Manifold	ICCSPEMF24G	24 Port SPE Vacuum Manifold	1
	ICCSPEMF02	Adjustable Oil-Free Diaphragm Vacuum Pumps, Vacuum Range 0.01-0.085 MPa, Power 90 W, with Waste Reservoir	1
	ICCSPEMF12G	12 Port SPE Vacuum Manifold	1
	ICCSDC3000D	Multi-tube vortex mixer, standard 50ml, 15ml universal adapter, speed 2800rpm/min,	1
	ICCBM2500	Multi-function vortex machine	1
	ICCBM100E	Mini Vortex Shaker	1
	ICCBN9602	96-Well Plate Nitrogen Evaporator	1
	ICCBN9603	96-Well Plate Nitrogen Evaporator, vision 2.0	1
	ICCBN2403	24-Well Plate Nitrogen Evaporator, vision 2.0	1
	ICCBN24	24-bit rotary water bath nitrogen blowing instrument, support group control, 1 unit/box, including V1.0 nitrogen blowing system	1
Sterile Filter Device	ICCVFP-090022PES1000	PES, 90 mm, 0.22 μ m, 1000 ml Funnel, 1000 ml Receiver Flask, Sterile	12
Glass Filter	ICCSK02	300ml Glass Funnel, 1000ml Filter Flask	1
Inserts	ICCSI1	Glass inserts with mandrel interior and polypropylene feet, for 8-425 screw-thread vials, Glass inserts with mandrel interior and polypropylene, 150 μ	100
	ICCSI2	Glass inserts with mandrel interior and polypropylene feet, for 9-425 screw-thread vials, Glass inserts with mandrel interior and polypropylene, 250 μ	100
	ICCSI3	Flat-bottom glass inserts, for 8-425 screw-thread vials, 250 μ L, 5x31 mm, clear	100
	ICCSI4	Flat-bottom glass inserts, for 9-425 screw-thread vials, 350 μ L, 6x31 mm, clear	100





Réalisation: D. Nagarachinda - E. Lacombiez - imChem 2023

*im*Chem

164 Avenue Joseph Kessel - Bâtiment 7 - 789600 - Voisins le Bretonneux - France
Tél. : +33 9 72 32 10 17 06 - Fax : +33 1 83 64 60 45 - info@imchem.fr - www.imchem.fr